



Why Foster Wheeler?

Foster Wheeler is a world-class international engineering and construction contractor, providing a full range of services for the pharmaceuticals, biotechnology and healthcare industries.

With a global track record for excellence in front-end design, project management, engineering, procurement, construction management and commissioning, our experts deliver safe, cost-effective and innovative solutions for revamps, upgrades or new facilities.



Global reach - local action

Other Foster Wheeler consultancy services include:

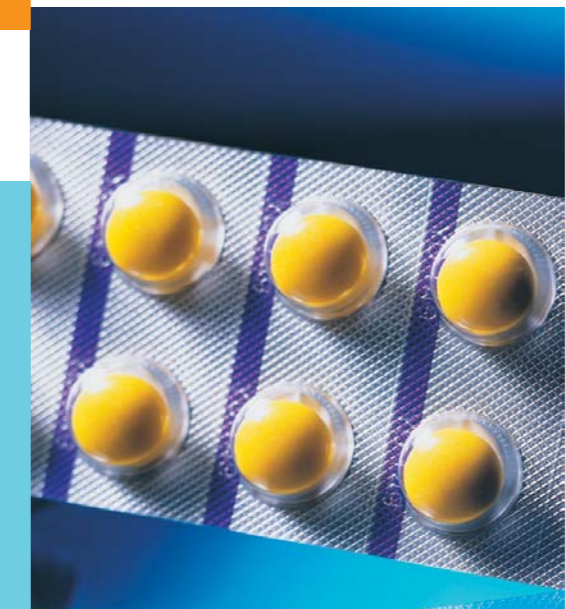
- Feasibility studies
- Concept design
- Process simulation
- Cost estimation
- Site selection
- Environmental impact assessment
- Regulatory compliance audits
- Benchmarking
- Process development
- Validation

the right people with a 'can do' attitude and the commitment to deliver



Pharmaceuticals Biotechnology Healthcare

Site Master Planning



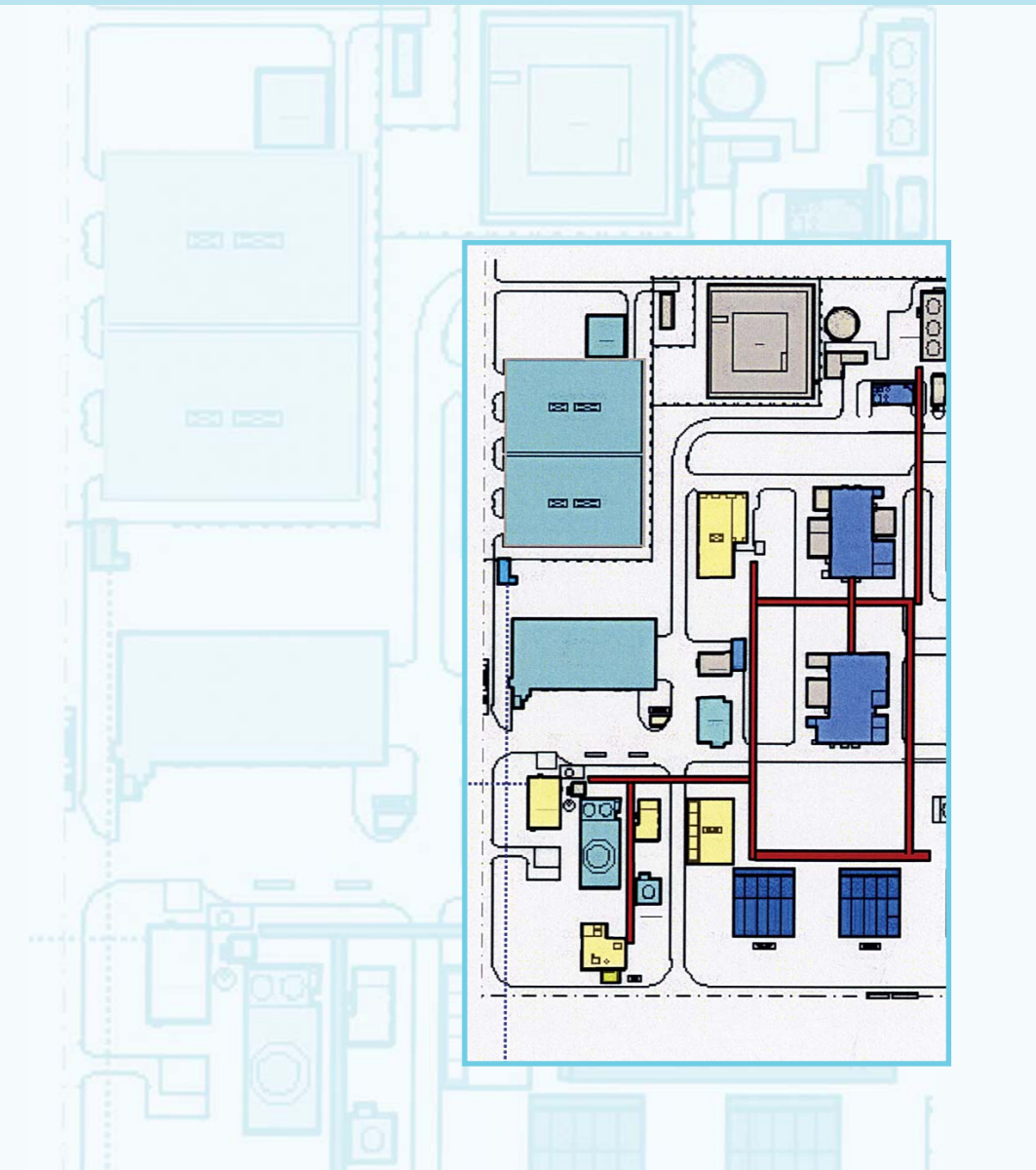
Why Master Plan?

A site master plan is one of the most important investments an owner can make.

The plan sets the overall strategy for current and future development of a site. To deliver the most efficient use of assets and investments, the plan must be well researched, flexible, innovative, and compliant with current legislation.

Foster Wheeler's three-phase methodology ensures a rigorous approach, keeping you fully involved in the decision-making process, providing high quality reports and presentation materials, and documenting all solutions considered and discarded as well as the final result.

Our work sets the foundation for years of cost-effective operation and development.



Contact us at:

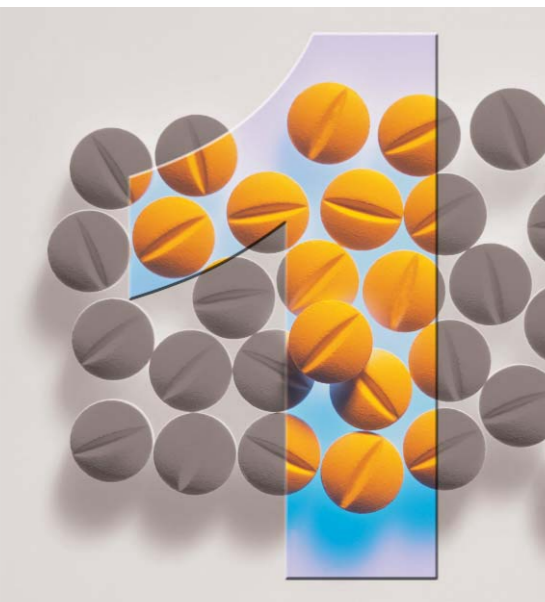
fw_pharma@fwc.com

www.fwc.com

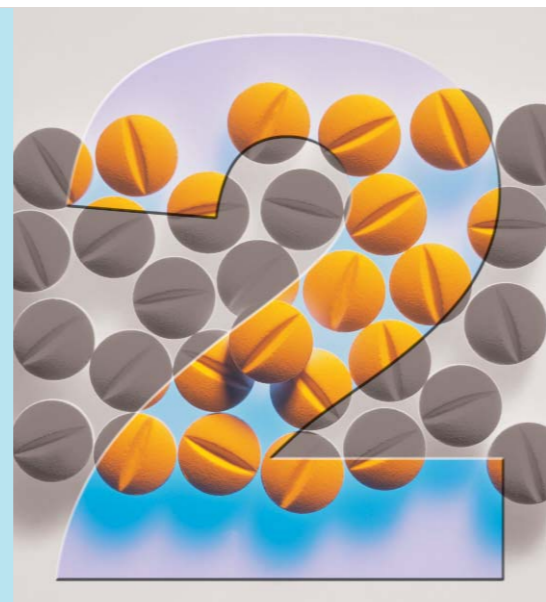


PHARMACEUTICALS - BIOTECHNOLOGY - HEALTHCARE

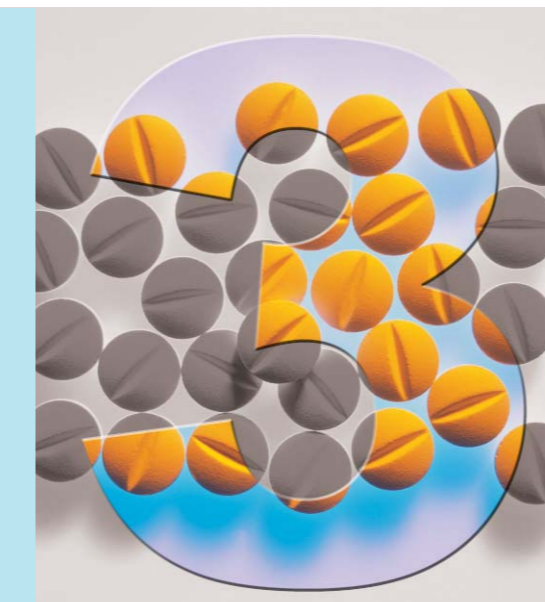




Data Collection



Concept Generation

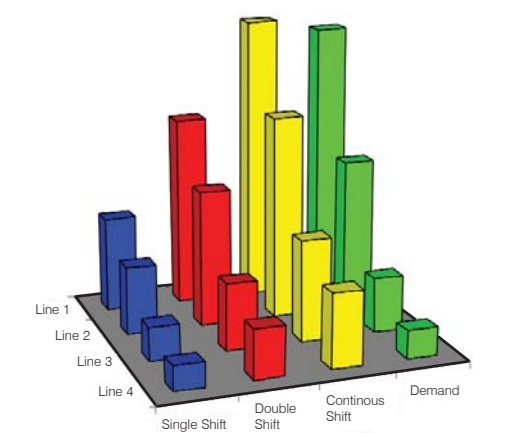
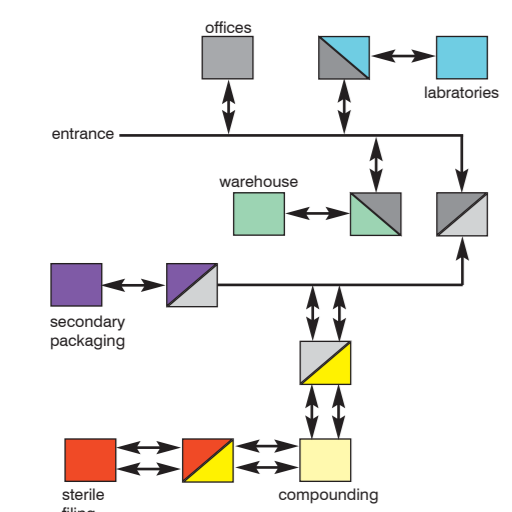


Master Plan Development



Satisfied Customers

Data Collection



The right foundation based on sound engineering

Foster Wheeler has the technical experience, business management and conceptual skills to apply to strategic site master planning.

A master plan depends on the quick and accurate collection of current site data and future needs.

We use site visits and customised questionnaires to collect pertinent data from our clients, whilst minimising the disruption to everyday activities.

We present data graphically wherever possible to help identify and present the issues that most affect the development of the site master plan.

Planning for the future

Based on the vision for the site and the future production scenario, we have the skills to analyse the impact on all aspects of the site including:

- Production capacity
- Warehousing, dispensing
- Utilities
- Personnel levels and support facilities
- Environmental and fire systems

We prepare summaries of the impact on each department in terms of space, equipment and personnel as an input to concept generation.

Concept Generation



Flexible and collaborative

We routinely manage workshops for combined Foster Wheeler and client teams to review the data collected and identify potential schemes.

Brainstorm ideas can be screened against success criteria including:

- Proximity relationships
- Footprint
- Cost
- Constructability
- Risk

We operate a flexible approach to each site master plan, and the engagement of the client team is always essential.

High quality reporting - a living document

We prepare high quality reports, both in terms of the content and the presentation. The report includes the logical steps taken to reach the selected scheme and the key features of the plan including:

- Phased layout drawings
- Material and personnel flows
- Implementation plan
- Key trigger points for investment in services
- Project listing with costing

The report is structured so that the client can easily update the report either on a regular basis or if key assumptions change.

Master Plan Development



Business benefits

The final report adds value by:

- Demonstrating a sound understanding of the site
- Meeting an agreed business plan
- Identifying all potential solutions
- Incorporating state-of-the-art technical solutions
- Prioritising alternatives against agreed criteria
- Challenging perceived constraints to test validity
- Meeting regulatory requirements
- Providing a clear cost-effective plan that is well researched and simply and effectively presented

Visual representation

Foster Wheeler routinely produces realistic 3D architectural impressions and photo-realistic montages to demonstrate the visual impact of the future site development.

Foster Wheeler has successfully completed site master plans for many of the leading pharmaceutical and fine chemical companies world-wide, including:

- Amersham Health
- Aventis
- Elan
- Eli Lilly
- GlaxoSmithKline
- Fournier Pharma
- Merck
- Pfizer
- Rhodia ChiRex
- Rohm & Haas
- Sanofi-Synthelabo
- Schering-Plough
- Serono
- Takeda



"We thank Foster Wheeler for providing such a well-researched and professional Site Master Plan report."

Francois Marivoet, General Manager, Schering-Plough.